



STI-C

VOLTAGE	230V 50Hz
CONTROL VOLTAGE	12 VOLT
SUCTION VOLUME	150M ³ /h
SUCTION VACUUM	210 mbar
SUPPLY AIR PRESSURE	MAX 8 bar
VACUM TURBINE	1.3 kW
NOISE	67 dBa
SIZES	450 X 450 X 800 mm
WEIGHT	41.5 Kg

STI-C

**INDUSTRIAL VACUUM CLEANER EQUIPPED WITH WHEELS.
SOLID AND COMPACT SHAPE, MANUAL SUCTION CONTROL.
ELECTRIC AND PNEUMATIC AUTOMATISMS.
RESERVE TANK FOR CLEANING THE FILTERS.
QUIET, TRANSPORTABLE, ONE MOTOR.
EQUIPPED WITH A HOSE OF mt. 5**

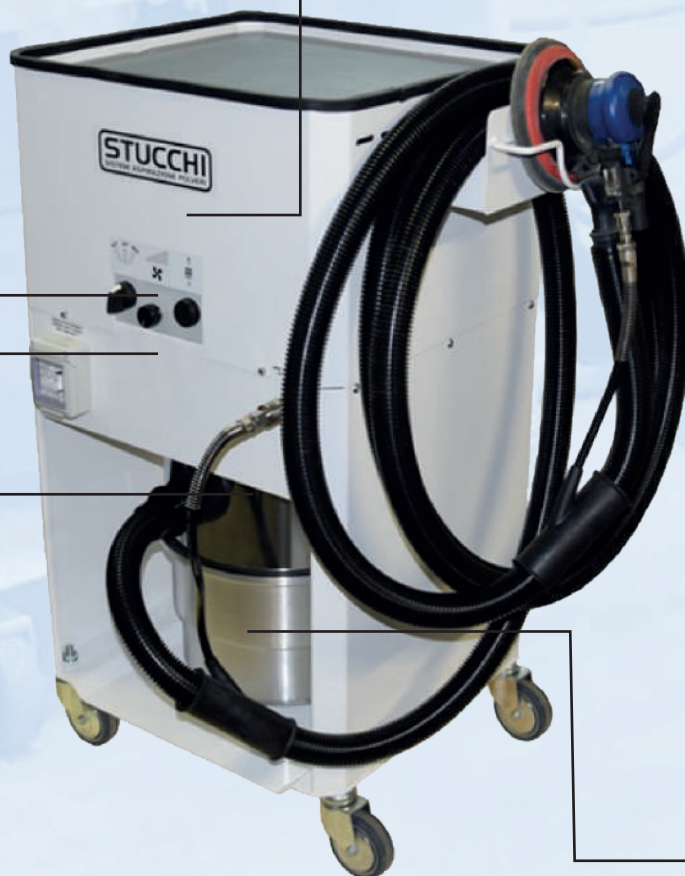


**HIGH PERFORMANCE
BRUSHES MOTOR**
Single phase - Three-stage

**MANUAL VACUUM
REGULATION**

**AUTOMATIC SUCTION
START**

**SELF CLEANING FILTERS
EACH 15 mins.**



**REMOVABLE DUST
CONTAINER BAG**

STI-C

The STI-C version is equipped with a reserve tank for the storage of compressed air.

Using the compressed air gun, it is possible to load the tank of your STI-C



The tank stores the amount of compressed air needed to clean the filters (8 hours guaranteed).

This is the best solution to have the efficiency of the mechanical piston without the encumbrance of the air hose connected to the machine.



Ideal for those who use electric sanders.

STI-C



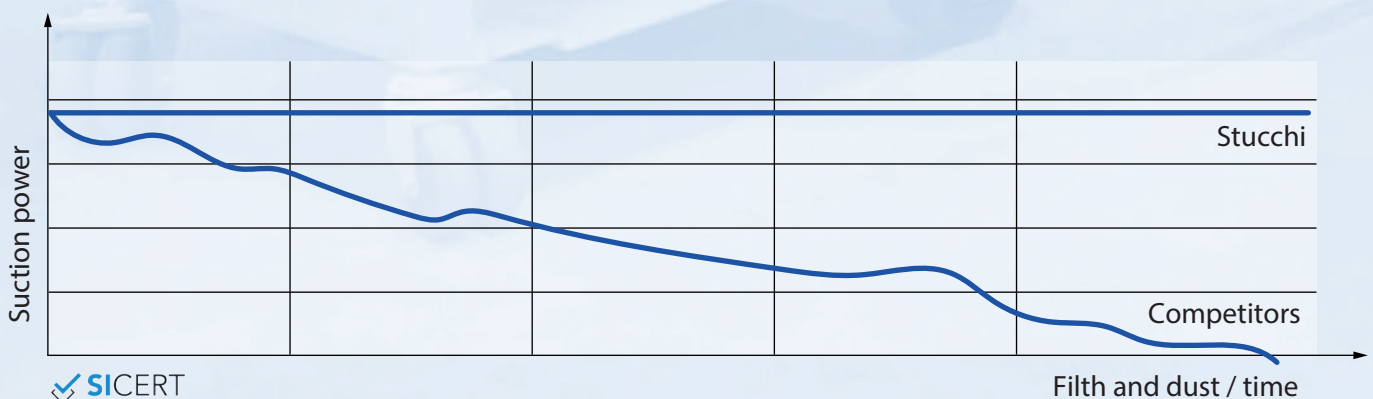
To effectively clean the filters mounted on the dust extractor, a mechanical shaking cleaning system has been developed. The electronic board controls automatically a pneumatic piston which, by shaking the filter intensely, causes, to the dust deposited filter, to fall into the powder container, thus allowing the filter to run optimally.

Piston cleaning system is recommended for any type of application, because it improves significantly the filter cleaning compared to the "vibrating motor" or "air jet" versions.

To clean the filter with the vertical piston becomes mandatory when it comes to extract powder, even fine, which can quickly clog the filter and cause the engine fail.

The main advantage of this cleaning system is the greater efficiency of the filter shaking with a piston. A further advantage is the automatic cleaning, which eliminates the problem of remembering to clean it manually, so that the operator will not have this commitment.

Self-cleaning Filter Guaranteed for 5 years



**No additional cost for the replacement of filters and bags.
Minimum maintainance time.**

Model **STI-C** has
numerous accessories for
make it even more
functional



KIT PC-I

The PC-I kit includes and useful multifunctional side with drawers, designed to be installed on our wheeled vacuum cleaners, models STI and ST2, is a fast solution created to make them even more versatile.



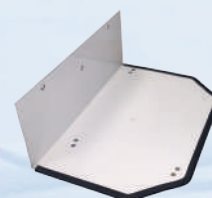
KIT PC-I BS

Useful functional side, to be equipped with accessory drawer.



ST-MPO

Accessory shelf.



ST-PT

Paper towels holder.



AWW

Waste basket.



STUCCHI

POWDERS EXHAUST SYSTEMS



ST2-C

VOLTAGE	230V 50Hz
CONTROL VOLTAGE	12 VOLT
SUCTION VOLUME	300M ³ /h
SUCTION VACUUM	210 mbar
SUPPLY AIR PRESSURE	MAX 8 bar
VACUUM TURBINE	1.3 kW + 1.3 kW
NOISE	68 dBa
SIZES	450 X 450 X 800 mm
WEIGHT	47 Kg

ST2-C

INDUSTRIAL VACUUM CLEANER EQUIPPED WITH WHEELS.
SOLID AND COMPACT SHAPE, MANUAL SUCTION CONTROL.
ELECTRIC AND PNEUMATIC AUTOMATISMS.
RESERVE TANK FOR CLEANING THE FILTERS.
QUIET, TRANSPORTABLE, TWO MOTORS.
EQUIPPED WITH A HOSE OF mt. 5



TWO HIGH PERFORMANCE
BRUSHES MOTORS
Single phase - Three-stage



MANUAL VACUUM
REGULATION



AUTOMATIC
SUCTION START

SELF-CLEANING FILTERS
EACH 15 mins.

REMOVABLE DUST
CONTAINER BAG

ST2-C



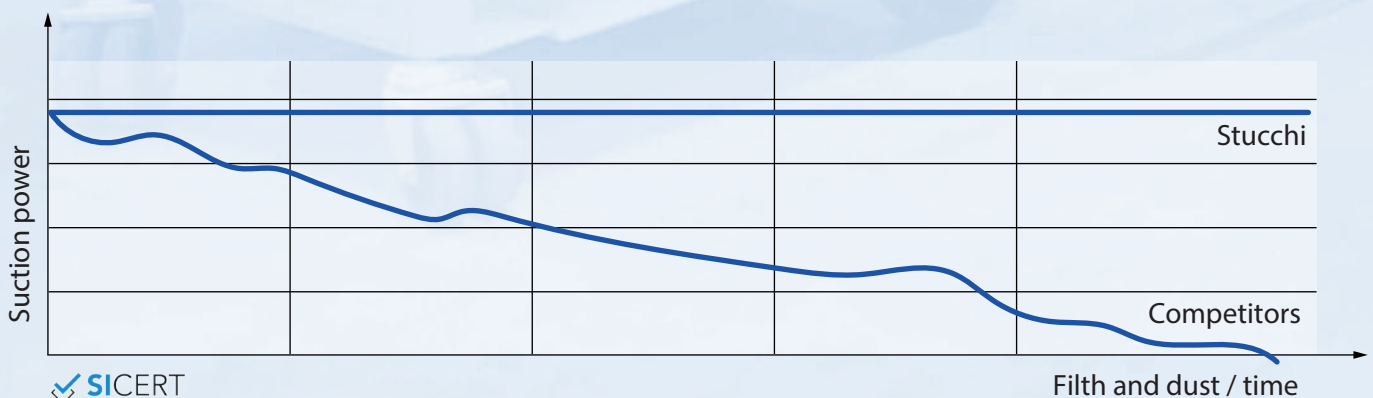
To effectively clean the filters mounted on the dust extractor, a mechanical shaking cleaning system has been developed. The electronic board controls automatically a pneumatic piston which, by shaking the filter intensely, causes, to the dust deposited filter, to fall into the powder container, thus allowing the filter to run optimally.

Piston cleaning system is recommended for any type of application, because it improves significantly the filter cleaning compared to the "vibrating motor" or "air jet" versions.

To clean the filter with the vertical piston becomes mandatory when it comes to extract powder, even fine, which can quickly clog the filter and cause the engine fail.

The main advantage of this cleaning system is the greater efficiency of the filter shaking with a piston. A further advantage is the automatic cleaning, which eliminates the problem of remembering to clean it manually, so that the operator will not have this commitment.

Self-cleaning Filter Guaranteed for 5 years



 **SICERT**
CERTIFIED QUALITY

Filt and dust / time

**No additional cost for the replacement of filters and bags.
Minimum maintainance time.**

Model **ST2-C** has
numerous accessories for
make it even more
functional



KIT PC-I

The PC-I kit includes and useful multifunctional side with drawers, designed to be installed on our wheeled vacuum cleaners, models STI and ST2, is a fast solution created to make them even more versatile.



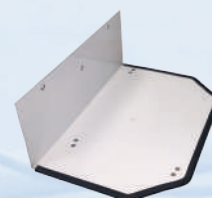
KIT PC-I BS

Useful functional side, to be equipped with accessory drawer.



ST-MPO

Accessory shelf.



ST-PT

Paper towels holder.



AWW

Waste basket.





AIRone

VOLTAGE	missing
CONTROLS VOLTAGE	missing
VACUUM TURBINE	missing
AIR CONSUMPTION	450 l/min
SANDER SUCTION VOLUME	35M ³ /h
SUPPLY AIR PRESSURE	MAX 6 bar
NOISE	58 dBa
SIZES	450 X 450 X 800 mm
WEIGHT	13 Kg

AIRone

**SANDING SYSTEM SUPPLIED ONLY BY COMPRESSED AIR.
EQUIPPED WITH SANDER AND SUCTION HOSE OF mt. 5.
DOES NOT NEED ELECTRICAL POWER SUPPLY.
HIGH ENERGY SAVINGS AID LESS TIME SPENT FOR MAINTAINANCE.**



SANDER



**SUCTION HOSE
mt. 3**



Without Motor

STUCCHI

POWDERS EXHAUST SYSTEMS



ST2-TF

VOLTAGE	230V 50Hz
CONTROL VOLTAGE	12 VOLT
SUCTION VOLUME	210 M ³ /h
SUCTION VACUUM	200 mbar
SUPPLY AIR PRESSURE	MAX 8 bar
VACUUM TURBINE	1.5 kW
NOISE	68 dBa
SIZES	500 X 1000 X 900 mm
WEIGHT	40 Kg

ST2-TF

INDUSTRIAL VACUUM CLEANER EQUIPPED WITH WHEELS.
SOLID AND COMPACT SHAPE, MANUAL
AND AUTOMATIC FILTER CLEANING.
ELECTRIC AND PNEUMATIC AUTOMATISMS.
FLAT SURFACE, SUCTION HOSES AND ORBIT SANDERS,
ACCESSORY SHELVES, PAPER BOXES.
PRACTICAL AND COMPLETE, THIS PRODUCT IS A REAL MOVING
SANDING SYSTEM WITH VERY HIGH PERFORMANCES.

SELF CLEANING
FILTERS EACH
15 mins.

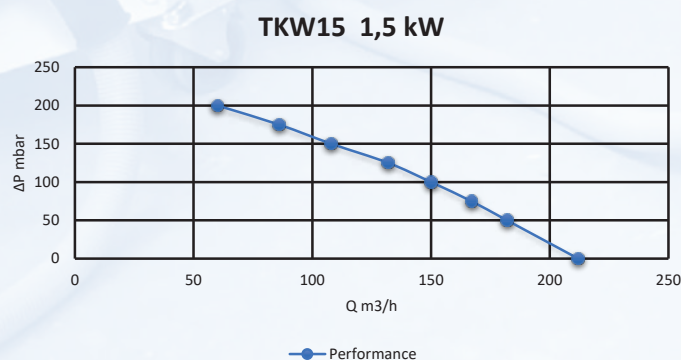
PROGRAMMABLE
ELECTRONIC BOARD

AUTOMATIC
SUCTION START

REMOVABLE DUST
CONTAINER BAG



THREE-PHASE TURBINE



ST2-TF



To effectively clean the filters mounted on the dust extractor, a mechanical shaking cleaning system has been developed. The electronic board controls automatically a pneumatic piston which, by shaking the filter intensely, causes, to the dust deposited filter, to fall into the powder container, thus allowing the filter to run optimally.

Piston cleaning system is recommended for any type of application, because it improves significantly the filter cleaning compared to the "vibrating motor" or "air jet" versions.

To clean the filter with the vertical piston becomes mandatory when it comes to extract powder, even fine, which can quickly clog the filter and cause the engine fail.

The main advantage of this cleaning system is the greater efficiency of the filter shaking with a piston. A further advantage is the automatic cleaning, which eliminates the problem of remembering to clean it manually, so that the operator will not have this commitment.

Self-cleaning Filter Guaranteed for 5 years



 **SICERT**
CERTIFIED QUALITY

**No additional cost for the replacement of filters and bags.
Minimum maintainance time.**

STUCCHI

POWDERS EXHAUST SYSTEMS



ME-I

VOLTAGE	230V 50Hz
CONTROL VOLTAGE	12 VOLT
SUCTION VOLUME	150 M ³ /h
SUCTION VACUUM	210 mbar
SUPPLY AIR PRESSURE	MAX 8 bar
VACUUM TURBINE	1.3 kW
NOISE	67 dBa
SIZES	500 X 400 X 2000 mm
WEIGHT	76 Kg

ME-I

**BUILT-IN SUCTION MODULE, IDEAL FOR PREPARATION AREAS,
EASY TO INSTALL AND USE.**

**SINGLE-PHASE BRUSHES MOTOR. SELF-CLEANING FILTER
SYSTEM THAT DOES NOT NEED ANY MAINTAINANCE.**

**IT`S EQUIPPED WITH AUTOMATIC USES
BOTH ELECTRIC AND PNEUMATIC AND CONTROLLED DRY AIR.
YOU CAN PUT THE HOSE IN THE HANSY FRONT POCKET.**

**PROGRAMMABLE
ELECTRONIC BOARD**

**SELF-CLEANING FILTERS
EACH 15 mins.**

**HIGH PERFORMANCE
BRUSHES MOTOR.
Single phase - Three-stage**



**REMOVABLE DUST
CONTAINER BAG**

**PNEUMATIC WINDER
10 mt Ø 12mm.**



**AUTOMATIC SUCTION
START**



ME-I



To effectively clean the filters mounted on the dust extractor, a mechanical shaking cleaning system has been developed. The electronic board controls automatically a pneumatic piston which, by shaking the filter intensely, causes, to the dust deposited filter, to fall into the powder container, thus allowing the filter to run optimally.

Piston cleaning system is recommended for any type of application, because it improves significantly the filter cleaning compared to the "vibrating motor" or "air jet" versions.

To clean the filter with the vertical piston becomes mandatory when it comes to extract powder, even fine, which can quickly clog the filter and cause the engine fail.

The main advantage of this cleaning system is the greater efficiency of the filter shaking with a piston. A further advantage is the automatic cleaning, which eliminates the problem of remembering to clean it manually, so that the operator will not have this commitment.

Self-cleaning Filter Guaranteed for 5 years



SICERT

**No additional cost for the replacement of filters and bags.
Minimum maintainance time.**

STUCCHI

POWDERS EXHAUST SYSTEMS



ME-IP

VOLTAGE	230V 50Hz
CONTROL VOLTAGE	12 VOLT
SUCTION VOLUME	300 M³/h
SUCTION VACUUM	210 mbar
SUPPLY AIR PRESSURE	MAX 8 bar
VACUUM TURBINE	1.3 + 1.3 kW
NOISE	72 dBa
SIZES	500 X 400 X 2000 mm
WEIGHT	86 Kg

ME-IP

**BUILT-IN SUCTION MODULE, IDEAL FOR PREPARATION AREAS,
EASY TO INSTALL AND USE.
TWO SINGLE-PHASE BRUSHES MOTORS. SELF-CLEANING FILTER
SYSTEM THAT DOES NOT NEED ANY MAINTAINANCE.
IT'S EQUIPPED WITH BOTH AUTOMATIC USES BOTH ELECTRIC
AND PNEUMATIC AND CONTROLLED DRY AIR.
YOU CAN PUT THE HOSE IN THE HANDY FRONT POCKET.**

**PROGRAMMABLE
ELECTRONIC BOARD**



**TWO HIGH PERFORMANCE
BRUSHES MOTORS
Single Phase - Three-stage**



**AUTOMATIC SUCTION
START**



**SELF-CLEANING FILTERS
EACH 15 mins.**

**REMOVABLE DUST
CONTAINER BAG**

**PNEUMATIC WINDER
10 mt \varnothing 12mm.**



ME-IP



To effectively clean the filters mounted on the dust extractor, a mechanical shaking cleaning system has been developed. The electronic board controls automatically a pneumatic piston which, by shaking the filter intensely, causes, to the dust deposited filter, to fall into the powder container, thus allowing the filter to run optimally.

Piston cleaning system is recommended for any type of application, because it improves significantly the filter cleaning compared to the "vibrating motor" or "air jet" versions.

To clean the filter with the vertical piston becomes mandatory when it comes to extract powder, even fine, which can quickly clog the filter and cause the engine fail.

The main advantage of this cleaning system is the greater efficiency of the filter shaking with a piston. A further advantage is the automatic cleaning, which eliminates the problem of remembering to clean it manually, so that the operator will not have this commitment.

Self-cleaning Filter Guaranteed for 5 years



 **SICERT**
CERTIFIED QUALITY

**No additional cost for the replacement of filters and bags.
Minimum maintainance time.**

STUCCHI

POWDERS EXHAUST SYSTEMS



ST3-TF

VOLTAGE	400V 50 Hz
CONTROL VOLTAGE	12 VOLT
SUCTION VOLUME	306 M³/h
SUCTION VACUUM	210 mbar
SUPPLY AIR PRESSURE	MAX 9 bar
VACUUM TURBINE	2.2 kW
NOISE	72 dBa
SIZES	520 X 620 X 1350 mm
WEIGHT	96 Kg

ST3-TF

**INDUSTRIAL VACUUM CLEANER FOR CENTRAL SYSTEMS.
THREE-PHASE TURBINE. AUTOMATIC AND MANUAL STARTER
OF THE TURBINE. SELF-CLEANING FILTER SYSTEM.**

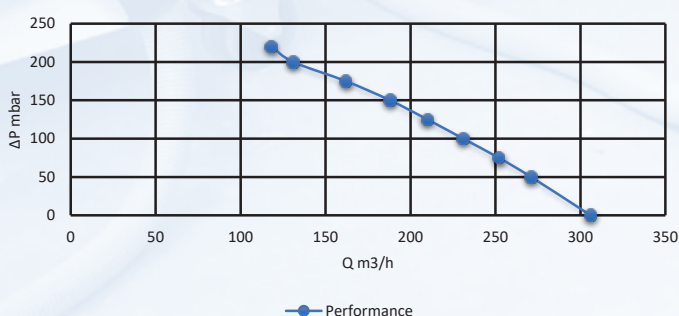
**PROGRAMMABLE
ELECTRONIC BOARD**

**AUTOMATIC SUCTION
START**

**SELF-CLEANING FILTERS
EACH 15 mins.**

**REMOVABLE DUST
CONTAINER BAG**

THREE-PHASE TURBINE



ST3-TF



To effectively clean the filters mounted on the dust extractor, a mechanical shaking cleaning system has been developed. The electronic board controls automatically a pneumatic piston which, by shaking the filter intensely, causes, to the dust deposited filter, to fall into the powder container, thus allowing the filter to run optimally.

Piston cleaning system is recommended for any type of application, because it improves significantly the filter cleaning compared to the "vibrating motor" or "air jet" versions.

To clean the filter with the vertical piston becomes mandatory when it comes to extract powder, even fine, which can quickly clog the filter and cause the engine fail.

The main advantage of this cleaning system is the greater efficiency of the filter shaking with a piston. A further advantage is the automatic cleaning, which eliminates the problem of remembering to clean it manually, so that the operator will not have this commitment.

Self-cleaning Filter Guaranteed for 5 years



 SICERT

**No additional cost for the replacement of filters and bags.
Minimum maintainance time.**



MP-C

SELECTOR ON/OFF MANUAL SUCTION

N I CONTROLLED DRY AIR AND CONTROL PRESSURE GAUGE

N I AUTOMATIC AIR FOR TOOLS

N I AUTOMATIC 230V SOCKET FOR TOOLS

N I SUCTION NOZZLE

N I TRAP, SUCTION MANUAL CLOSING SYSTEM

MP-C

ANGULAR MULTIFUNCTIONAL MODULE FOR DISTRIBUTION
OF ELECTRIC AND PNEUMATIC ENERGY AND VACUUM.

SELECTOR ON/OFF
MANUAL SUCTION

PRESSURE
GAUGE

TRAP.
SUCTION MANUAL
CLOSING SYSTEM

AUTOMATIC AIR
FOR TOOLS

CONTROLLED
DRY AIR

AUTOMATIC 230V SOCKET
FOR TOOLS

SUCTION
NOZZLE

MP-C



THE ANGULAR MULTIFUNCTIONAL MODULE IS A PRODUCT USED AS A CONNECTION BETWEEN THE VACUUM-CLEANING CENTRAL UNIT AND THE OPERATIVE AREA. IT`S POSSIBLE FIT IT BETWEEN THE WALLS OF THE PREPARATION AREAS (1) OR USE IT AS A FREE-STANDING (2).



Energy providers modules are designed to use corners that often are not used in one`s own workplace. Ideal for one workstation. It`s predisposed with one suction inlet inside the holder-hose pocket and related manual device for the interception of the suction in correspondence of the roto-orbital holder, it will be enough to reposition the sander to close the manual device to stop the suction. It`s also equipped with air outlet and electric socket dedicated for the connection to the Stucchi`s vacuum-cleaning central unit and to allow the automatic start of the machine. It will be possible to activate the suction also trough the selector AUTO/MAN (O/I) installed on the frontal panel. Provided with one supplementary outlet of compressed adjustable air, with a monitoring manometer. The higher part can be personalised following the customer`s needs, it will be possible to insert electric and pneumatic hose reels, electric industrial sockets and much more.



MP-2

SELECTOR ON/OFF MANUAL SUCTION

N 1 CONTROLLED DRY AIR AND CONTROL PRESSURE GAUGE

N 2 TRAP, SUCTION MANUAL CLOSING SYSTEM

N 1 230V SCHUKO SOCKET

HANDY FRONT POCKETS WITH

N 2 SUCTION HOUSES

N 2 AUTOMATIC AIR FOR TOOLS

N 2 AUTOMATIC 230V SOCKET FOR TOOLS

MP-2

MULTIFUNCTIONAL MODULE FOR THE DISTRIBUTION OF ELECTRIC AND PNEUMATIC ENERGY, AND VACUUM.

**SELECTOR ON/OFF
MANUAL SUCTION**

**PRESSURE
GAUGE**

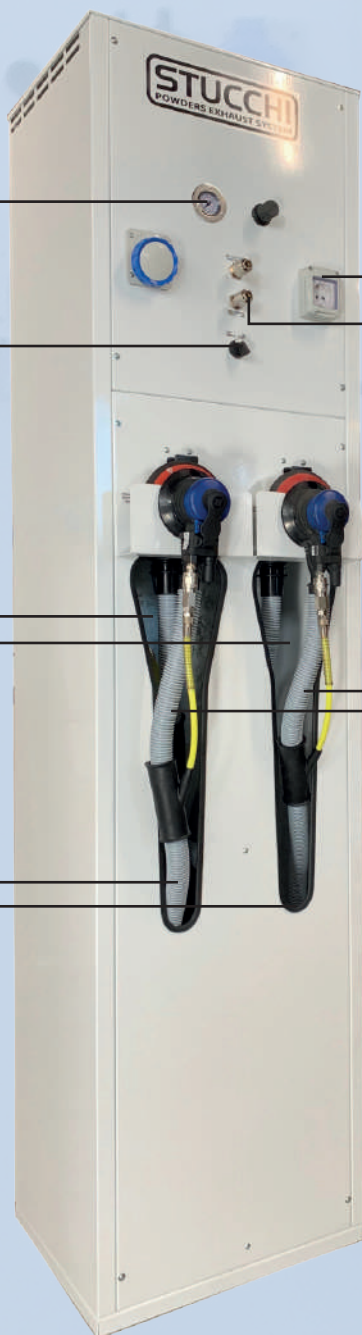
**230V SCHUKO
SOCKET**

DIRECT AIR

**2 AUTOMATIC 230V
SOCKETS FOR
TOOLS**

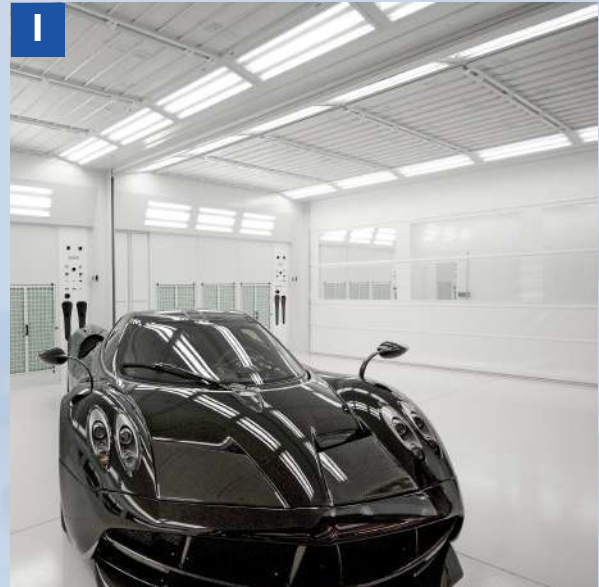
**2 SUCTION
HOUSES**

**AUTOMATIC AIR
FOR TOOLS**



MP-2

THE DISTRIBUTION MODULE IS A PRODUCT USED AS A CONNECTION BETWEEN THE VACUUM-CLEANING CENTRAL UNIT AND THE OPERATIVE AREA. IT'S POSSIBLE FIT IT BETWEEN THE WALLS OF THE PREPARATION AREAS (1) OR USE IT AS A FREE-STANDING (2).



Energy providers modules are products available for several compositions.

The MP-2 model is available for 2 workstations. It's predisposed with two suction inlets inside the holder-hose pocket and related manual devices for the interception of the suction in correspondence of the roto-orbital holder, it will be enough to reposition the sander to close the manual devices to stop the suction. It's also equipped with air outlets and electric sockets dedicated for the connection to the Stucchi's vacuum-cleaning

central unit and to allow the automatic start of the machine. It will be possible to activate the suction also through the selector AUT/MAN (O/I) installed on the frontal panel. Provided with 2 230V electrical service sockets and with 2 supplementary outlets of compressed air, one adjustable, with a monitoring manometer, another direct.

The frontal panel can be personalised following the customer's needs, it will be possible to insert electric and pneumatic hose reels, electric industrial sockets and much more.



MP-CM

MASKING PAPERS 85cm.

MASKING PAPERS 45cm.

MASKING PAPERS 18cm.

FILMS IN SPOOLS 90cm.

ACCESSORY SHELF

WASTE BASKET

DIMENSIONI 40x100x200cm

MP-CM

PAPER HOLDER MODULE DEDICATED TO THE MASKING OF CARS` SURFACES.

MASKING PAPERS 85cm

ACCESSORY SHELF

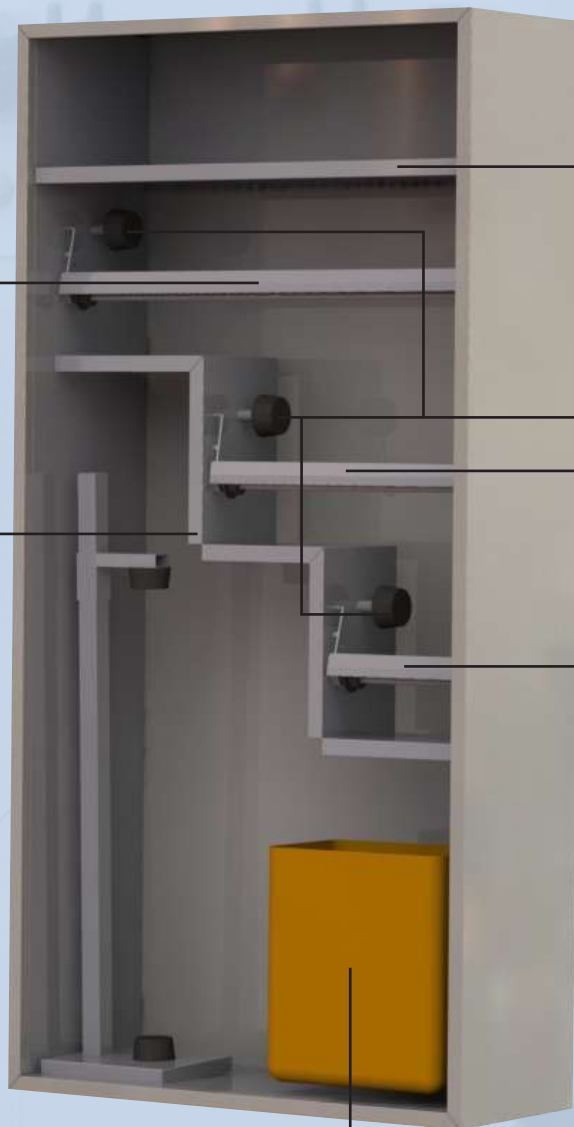
TAPE HOLDER

MASKING PAPERS 18cm

WASTE BASKET

FILMS IN SPOOLS 90cm

MASKING PAPERS 45cm



MP-CM

THE PAPER HOLDER MODULE FOR CAR-MASKING FORMS PART OF A FRNITURE RANGE DEDICATED TO THE WORLD OF THE BODY SHOP. IT`S POSSIBLE FIT IT BETWEEN THE WALLS OF THE PREPARATION AREAS (1) OR USE IT AS A FREE-STANDING (2).

The module for car-masking is a product unique of its kind. The MP-CM is designed by Stucchi to complement its own range of vacuum cleaners. With this article it will finally be possible to have an equipped wall having the same design of the machines with our brand. With our module you have the possibility to have always at hand the three measures of spools that are mostly used from the operators and one spool of protective film. The adhesive tape is applied simultaneously with the paper. It`s also equipped with shelves for supplies and waste bin. Reduce time without sacrificing the order and remove all the trolleys all over the workshop!

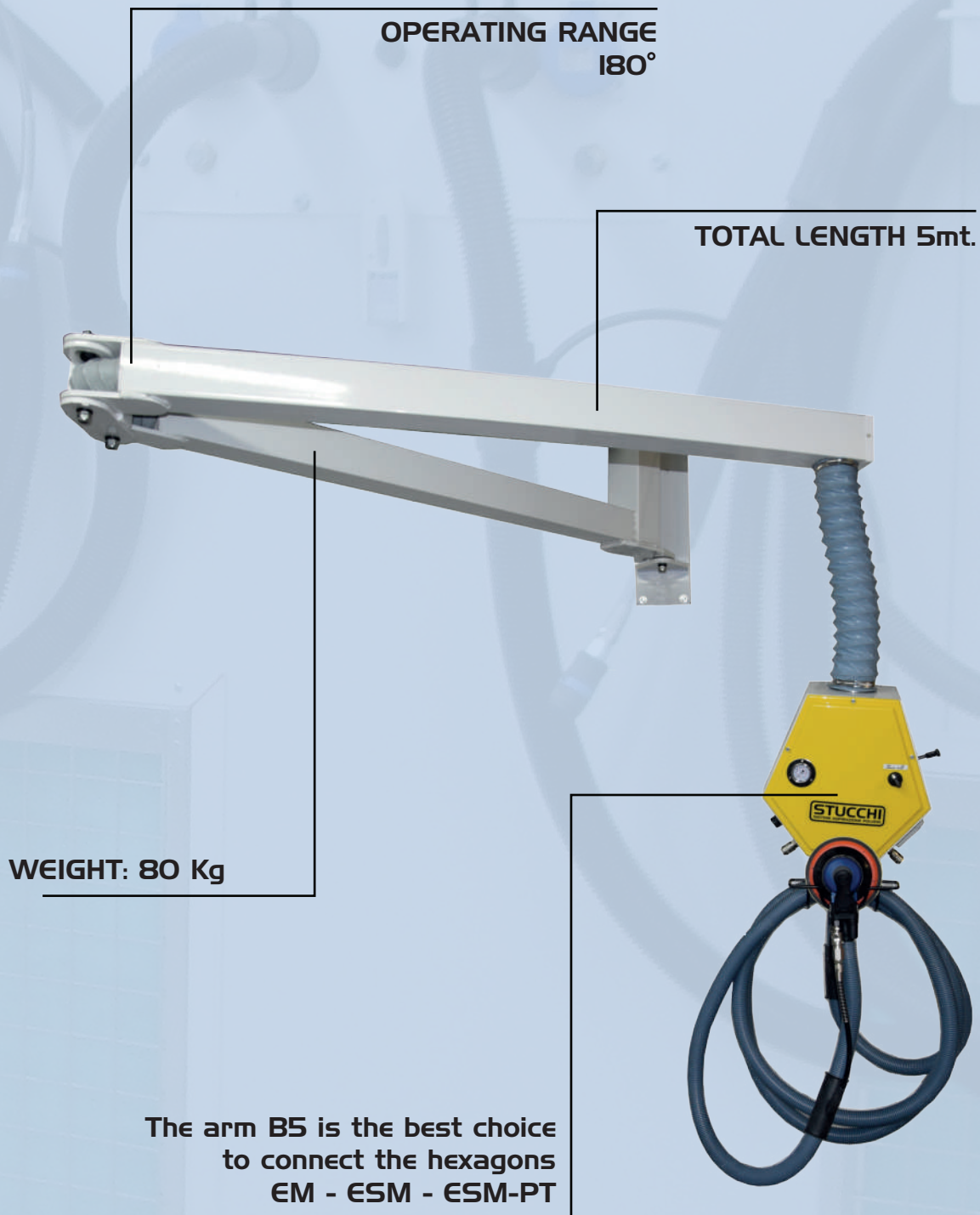


B5

TOTAL LENGTH	5 mt.
OPERATING RANGE	180°
WEIGHT	80 Kg

B5

**ARTICULATED ARM FOR THE DISTRIBUTION OF ELECTRIC AND
PNEUMATIC ENERGY, AND VACUUM.
USED TO MOVE THE MULTIFUNCTIONAL HEXAGONS.**



B5

TELESCOPIC ARM INSTALLED ON THE WALL BY USING A SUPPORT BRACKET FOR REACHING THE WORKING POSITION WITHIN A RANGE OF FIVE OR SIX METERS WITH A 180° ROTATION, WITHOUT OBSTACLES SUCH AS ELECTRIC CABLES, COMPRESSED AIR AND SUCTION HOSES.



Articulated arms are the solution that allows to have at hand vacuum, air and power; or allows to clear the area to pursue different works and exploit completely the sizes at their disposal.

The article **B5** can be connected to a wall-mounted vacuum cleaner and matched to a multifunctional hexagon creating a completely independent station (1). The choice of ht hexagon will be proportional to the vacuum cleaner used, 1 or 2 operators.



At the same time, the **B5** is often used also in more complex installations, in centralized systems (2). Using our article **LT**, this product is connected to big vacuum-cleaning centrals units designed to cover big areas.

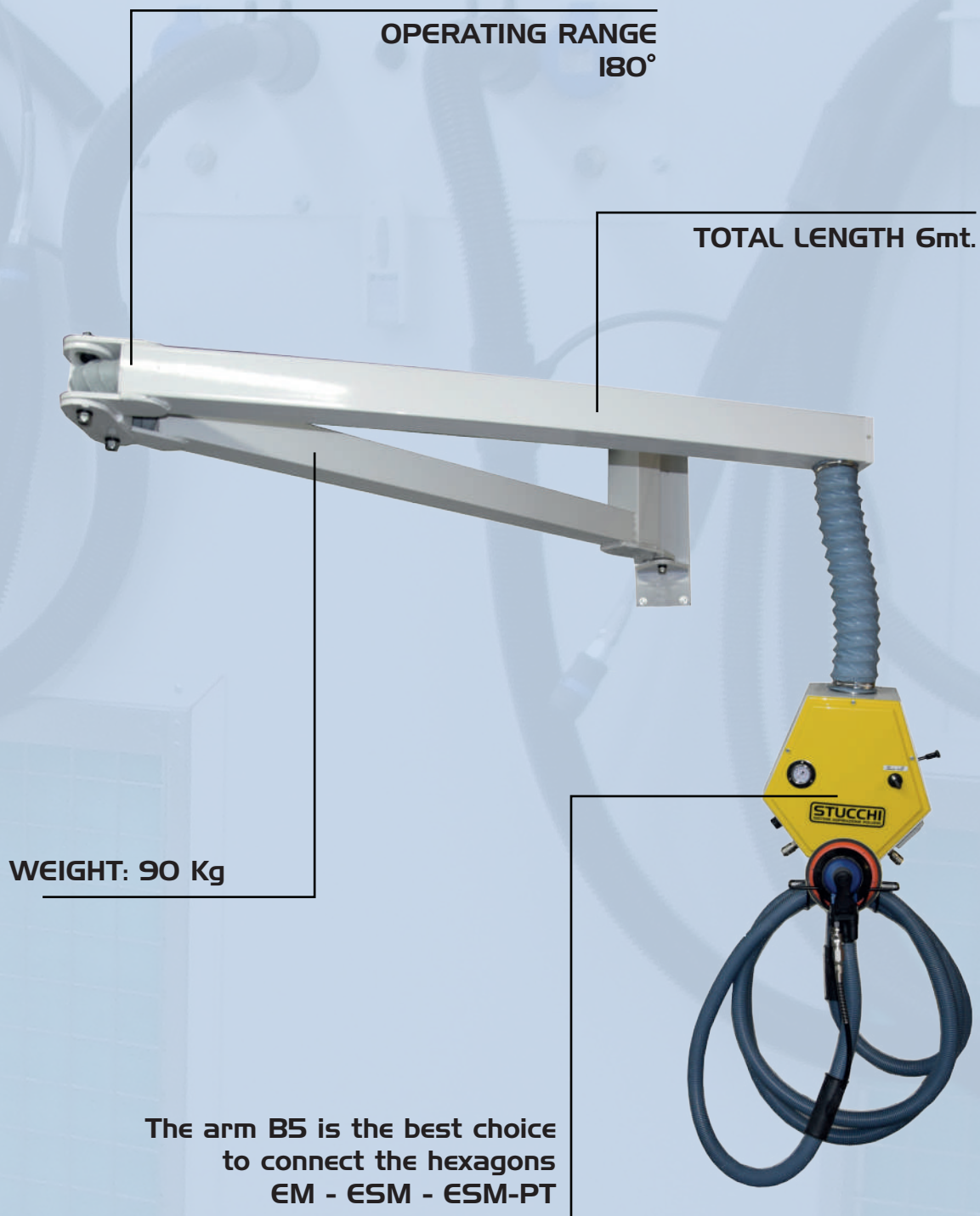


B6

TOTAL LENGTH	6 mt.
OPERATING RANGE	180°
WEIGHT	90 Kg

B6

**ARTICULATED ARM FOR THE DISTRIBUTION OF ELECTRIC AND
PNEUMATIC ENERGY, AND VACUUM.
USED TO MOVE THE MULTIFUNCTIONAL HEXAGONS.**



B6

TELESCOPIC ARM INSTALLED ON THE WALL BY USING A SUPPORT BRACKET FOR REACHING THE WORKING POSITION WITHIN A RANGE OF FIVE OR SIX METERS WITH A 180° ROTATION, WITHOUT OBSTACLES SUCH AS ELECTRIC CABLES, COMPRESSED AIR AND SUCTION HOSES.



Articulated arms are the solution that allows to have at hand vacuum, air and power; or allows to clear the area to pursue different works and exploit completely the sizes at their disposal.

The article **B6** can be connected to a wall-mounted vacuum cleaner and matched to a multifunctional hexagon creating a completely independent station (1). The choice of ht hexagon will be proportional to the vacuum cleaner used, 1 or 2 operators.



At the same time, the **B6** is often used also in more complex installations, in centralized systems (2). Using our article **LT**, this product is connected to big vacuum-cleaning central units designed to cover big areas.

STUCCHI

POWDERS EXHAUST SYSTEMS



MI-JOLLY

VOLTAGE	230V 50Hz
SUCTION VOLUME	2000 M ³ /h
VACUUM TURBINE	750 W - 3 speeds
SIZES	800 X 1000 X 900 mm
WEIGHT	80.5 Kg
OPTIONALS	Wheels, External Exhaust, Extension

MI-JOLLY

SUCTION BENCH FOR SPECIAL WORKS, MANUAL WORKS OR USING TOOLS WITHOUT SUCTION. VERTICAL CARTRIDGE FILTER TO COLLECT DUST IN THE REMOVABLE POCKETS WITH MANUAL OPENING. MANUAL START.

Suction bench with reduced dimensions, the model MI Jolly is an independent working station, designed for small areas. Very quiet engine, 72 dB, with a rubber-coated flat surface anti-slip and scratch resistant. Its reduced dimensions and the installation on wheels allow an easy handling also in small areas.

Suited to careful works, to finish delicate details but also for works in series of big productions. The professional and clean line makes it perfect for every kind of environment, jewellers' workshops, dentals technicians, silk-screen printing and much more.

Like all our benches, also the MI Jolly version, is equipped with filters of a F9 filter class, perfects for sanding dust, but its possible to build different types, H class for dusts dangerous for the health, ATEX certified for potentially explosives dusts and/or even use some pre-filters for different needs, like paint and spray hood, or a metallic mail for protection against sparks for grinding and deburring with abrasives.



MI-JOLLY

Whenever there is the need to use the bench for bigger components, bigger surfaces on the flat surface, it is possible to equip the bench of its useful extensions, MI Jolly Extension, easy to apply and even more easy to use. The extensions of this bench allow to extend the flat surface for a maximum of 1.5mt each side, and when needed to make higher the surface for a maximum of 70cm. It is possible to build an extension on each side



Another useful accessory is the completely hermetic box, the MI Iron Box, a structure closer to a sandblaster, with a frontal glass to check the production, gloves to grab the workpieces and an external light.